

6 Oswald Road, Chorlton, Manchester, M21 9LH



**JP&Brimelow**  
ESTATE AGENTS



6 3 2 D

\*\*\*VIDEO TOUR AVAILABLE\*\*\* A spacious & imposing, SIX BEDROOM, semi-detached property. This bay fronted home is located on a highly regarded tree lined road in the heart of Chorlton village.

Conveniently located within walking distance of Chorlton Village, with excellent primary schools nearby and a wide range of local amenities close at hand, including restaurants, delis, and shops on Manchester Road. The Metrolink station is also nearby, providing direct access to the City Centre and MediaCityUK.

The thoughtfully arranged property is spread over four floors and I brief consists of; an entrance hall with stairs down into the useful chamber cellar, a large lounge to front aspect benefitting from a bay window and period feature fireplace, a good sized dining room with views into the rear garden, a fitted kitchen, and a white four-piece bathroom suite. Access out into the rear garden can also be found on this floor.

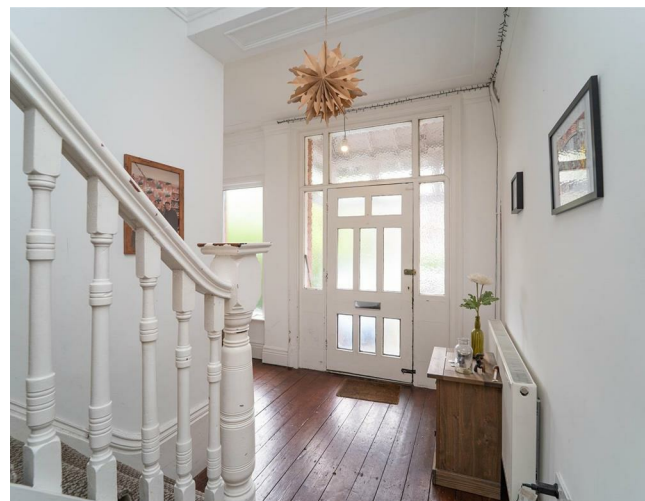
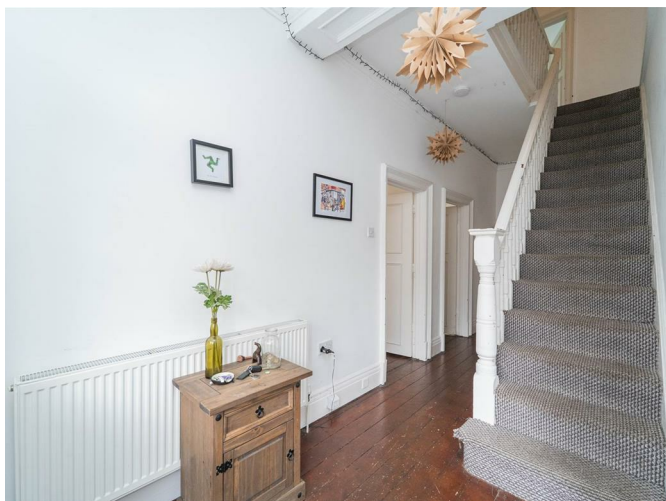
Stairs leading to the first-floor landing reveal three sizeable double bedrooms, a further single bedroom, a white three-piece bathroom suite, and a separate W.C.

To the second floor there are a further two large double bedrooms completing this fantastic period property.

The property benefits from gas fired central heating, high ceilings, stripped and varnished floor boards, period feature fireplaces, a driveway providing off road parking and a read enclosed garden.

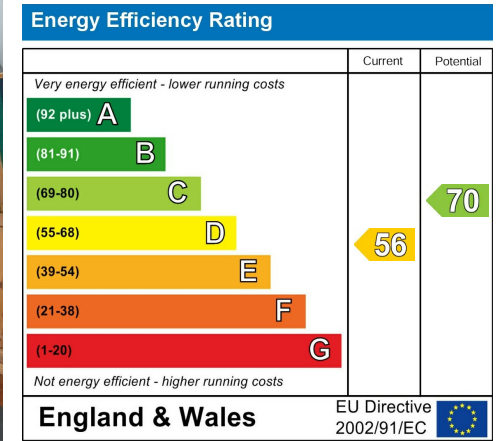
OFFERED WITH NO VENDOR CHAIN.

£875,000





## EPC Chart



Tenure: Freehold Council Tax Band: A



JP & Brimelow Estate Agents Ltd  
 430 Barlow Moor Road, Manchester, M21 8AD  
 Tel: 0161 8822233  
 E: sales@jpbrimelow.co.uk www.jpandbrimelow.co.uk



**JP & Brimelow**  
 ESTATE AGENTS

NOTICE: JP & Brimelow Estate Agents Ltd for themselves and for the vendors or lessors of this property whose agents they are give notice that:

- (i) the particulars are set out as a general outline only for the guidance of intending purchasers or lessees, and do not constitute, nor constitute part of, an offer or contract;
- (ii) all descriptions, dimensions, references to the condition and necessary permissions for use and occupation, and other details are given in good faith and are believed to be correct but any intending purchasers or tenants should not rely on them as statements or representations of fact but must satisfy themselves by inspection or otherwise as to the correctness of each of them;
- (iii) no person in the employment of JP & Brimelow Estate Agents Ltd has any authority to make or give any representation or warranty whatever in relation to this property.

jpandbrimelowstateagents

@jpandbrimelow

